



CRAWLER DIAMOND CORE DRILLING RIG

ADVANTAGE

- >> CUMMINS diesel engine
- >> Foldable & Extendable Mast
- >> Multi-Angle Drilling 45°-90°
- >> 0-2800M drilling capacity
- >> Hydraulic winch lifting
- >> High pressure mud pump

JCDRILL

JCD2200S



BEIJING JINCHENG MINING TECHNOLOGY CO., LTD.

Add: Rm1604, Mansion 2, No.A13 Beiyuan Road, Chaoyang District, Beijing, China

Mob: 0086 13811934576

Tel: 0086 10 5368 1788

Fax: 0086 10 51617069

Email: sales@jcdrill.com

Web: www.jcdrill.com

WhatsApp/Viber/Wechat: +86 13810203890



JCD2200S

CRAWLER DIAMOND CORE DRILLING RIG

JCD2200S is designed for deep and high-torque core drilling applications, offering unmatched power and capacity for advanced exploration projects. Supporting HTW, NTW, and BTW drilling up to 2800 meters, it is built to handle extreme geological conditions and long-duration drilling with superior performance.

FEATURES

Powerful power system

JCD2200S is equipped with a 179kW CUMMINS engine and a 479L/min high-flow hydraulic system, delivering sustained high torque up to 10000Nm for deep and heavy-duty drilling operations.

High-efficiency improvement system

A dual-rope hoist system-1000kg for fast rod handling and 15,000kg for heavy lifting-enhances operational efficiency and safety during long drilling cycles.

Deep drilling structure

Its 3600mm feed stroke and 44-ton pull-up force provide the structural power and control needed for ultra-deep coring in dense formations, with adjustable drilling angles from 45° to 90°.

Continuous operation guarantee

The rig features a BW-320 mud pump and an 11kW maintenance-free generator, offering continuous flushing and reliable power in remote environments, while maintaining excellent terrain adaptability and mobility.

MAIN ACCESSORIES

Through-Hole Rotary Head

The rotary head offers torque ranging from 1600 to 10000 Nm and speeds of up to 1200 RPM, suitable for varied conditions.

Powerful CUMMINS Engine

Powerful CUMMINS Engine 179kW of reliable power ensures consistent performance and efficient drilling in high-resistance formations.

Advanced Control Panel

Centralized platform allows operators to monitor and manage all rig functions safely and efficiently.

Telescopic Mast- two-stage link sliding frame with 3800mm feed stroke for flexible drilling.

Large-capacity winch with high-displacement motor for fast lifting.

Integrated control console-remote controller for improving mobility and efficiency.

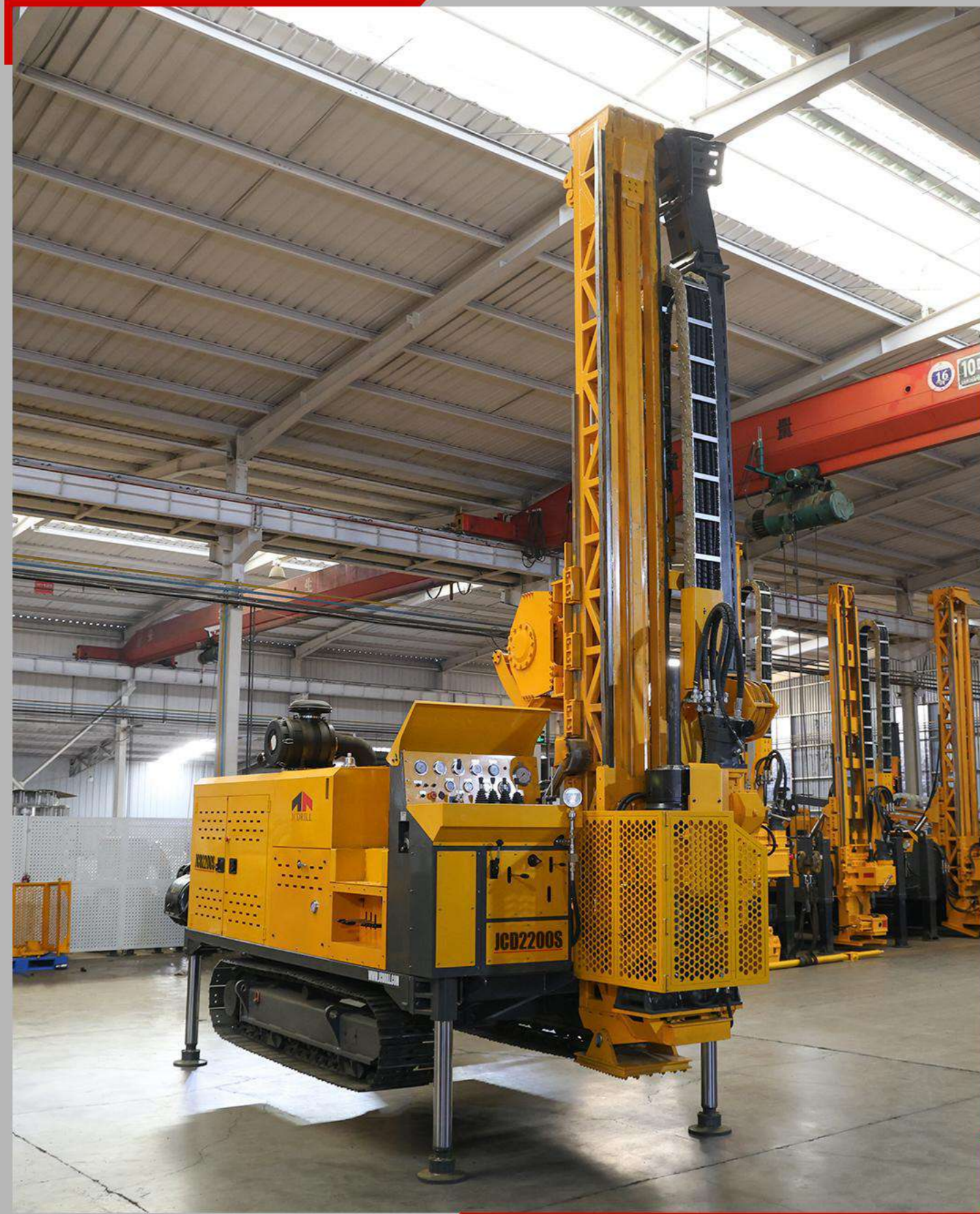
A hydraulic clamp and side-shifting rotary head streamline rod handling, improving speed and ease



JCDRILL

WWW.JCDRILL.COM

Product Display



Specification

Performance parameter	Unit	JCD2200S
Drilling Capacity		
Drilling Capacity		HTW-NTW-BTW
Drill Depth	m	1100-2200-2800
Hydraulic System		
Rated Pressure	MPA	28
Rated Flow	L/min	479
Heat Dissipation		Air Cooling
Engine		
Brand		CUMMINS
Type		Turbocharger
Rated Speed	RPM	2200
Rated Power	kW	179
Drilling System		
Torque	N.M.	1600-10000
Speed	RPM	1200
Tower Type		One-piece Ground-touching
Feeding Stroke	mm	3600
Drilling Angle	°	45-90
Max. Pull Up Capacity	Ton	44
Max. Push Down Capacity	Ton	22
Rope Hoist		
Lifting Capacity	kg	1000/ 15000
Speed	RPM	100-400/ 0-50
Wire Rope Diameter	mm	6/ 24
Rope Capacity	m	2200/ 45
Walking System		
Operation Type		Manual & Remote Control
Walking Speed	KM/H	3.5
Climbing Angle	°	40
Mud Pump		
Model		BW-320
Flow	L/MIN	0-320
Pressure	MPA	0-10
Hydraulic Generator		
Type		Variable Frequency Brushless, Maintenance-Free
Power	kW	11
Voltage	V	220/ 380
Weight & Dimensions		
Transport Size	mm	6060* 2170* 2500
Weight	Ton	13

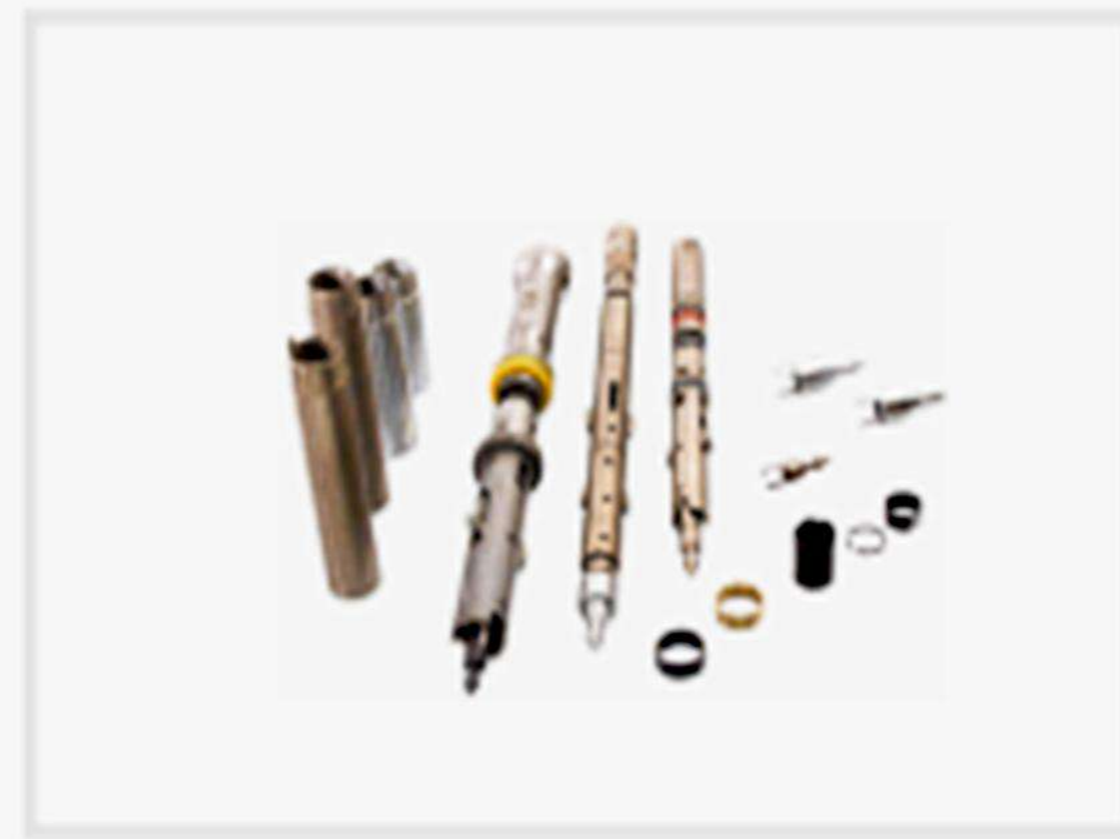
Accessories



Core Drilling Bits



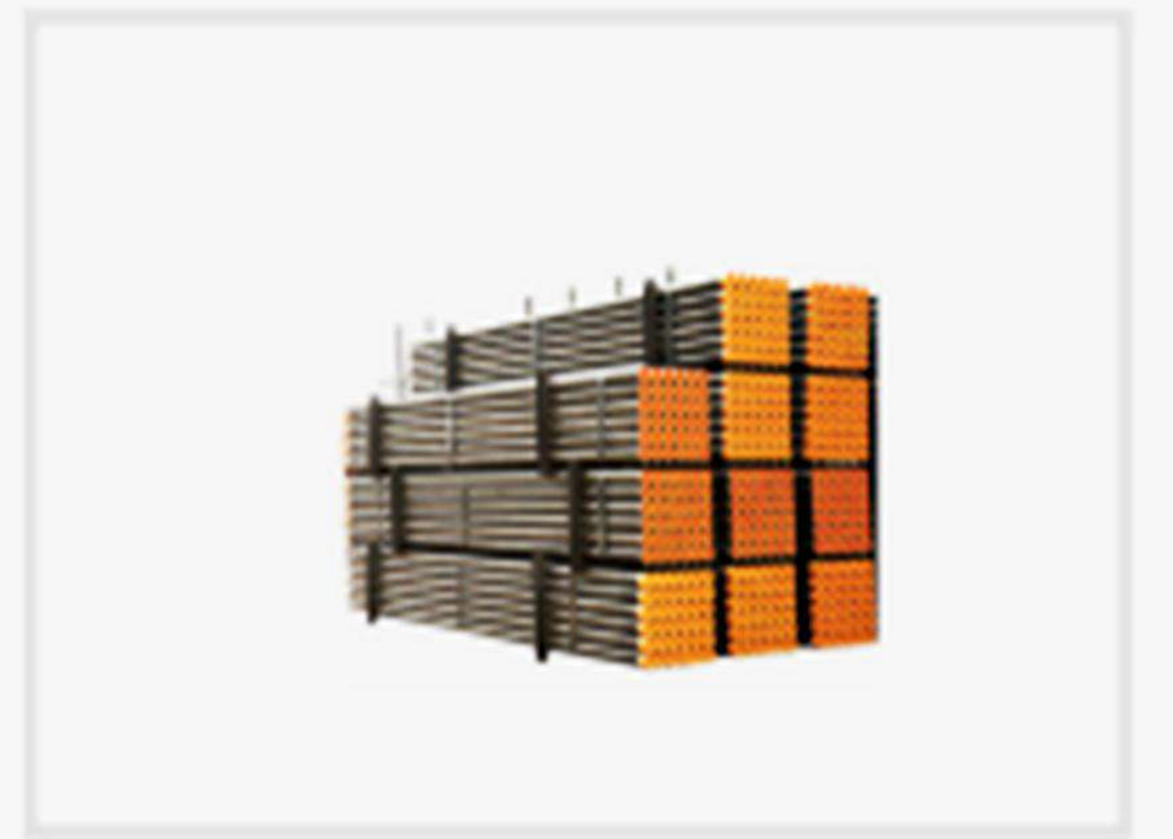
Reaming Shells



Core Barrels



Overshot



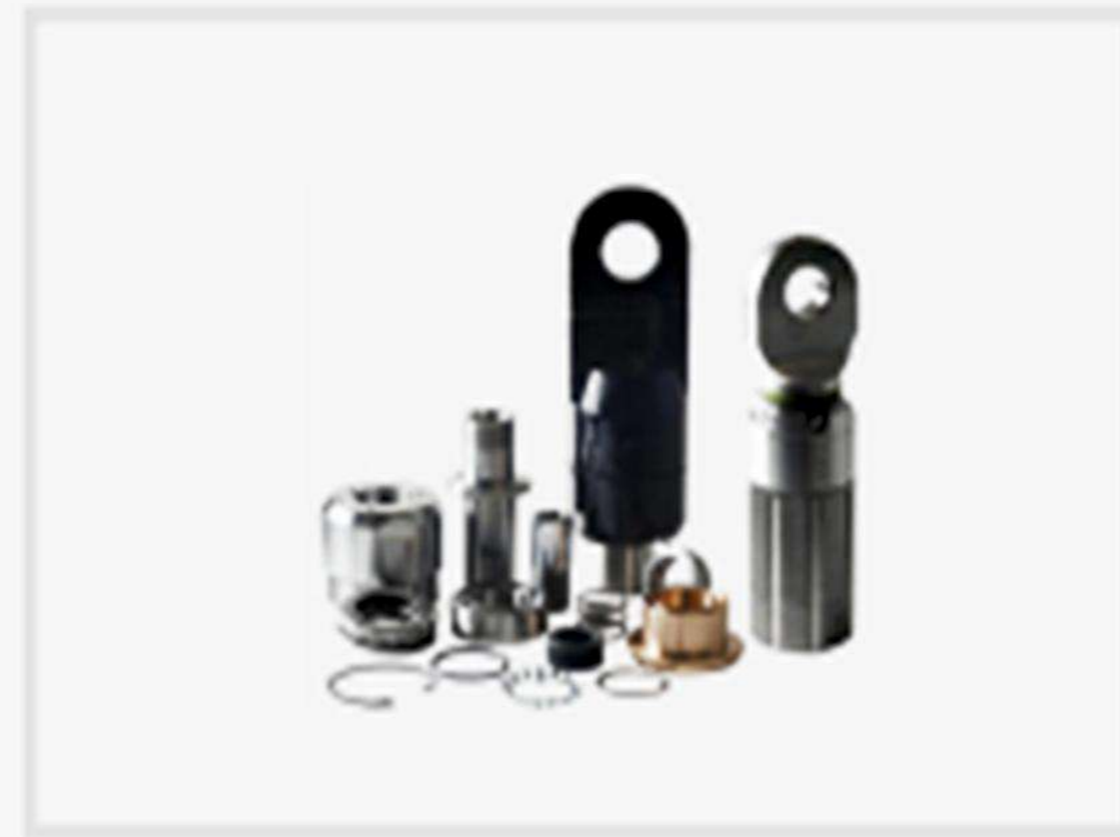
Drill Pipe&Casing



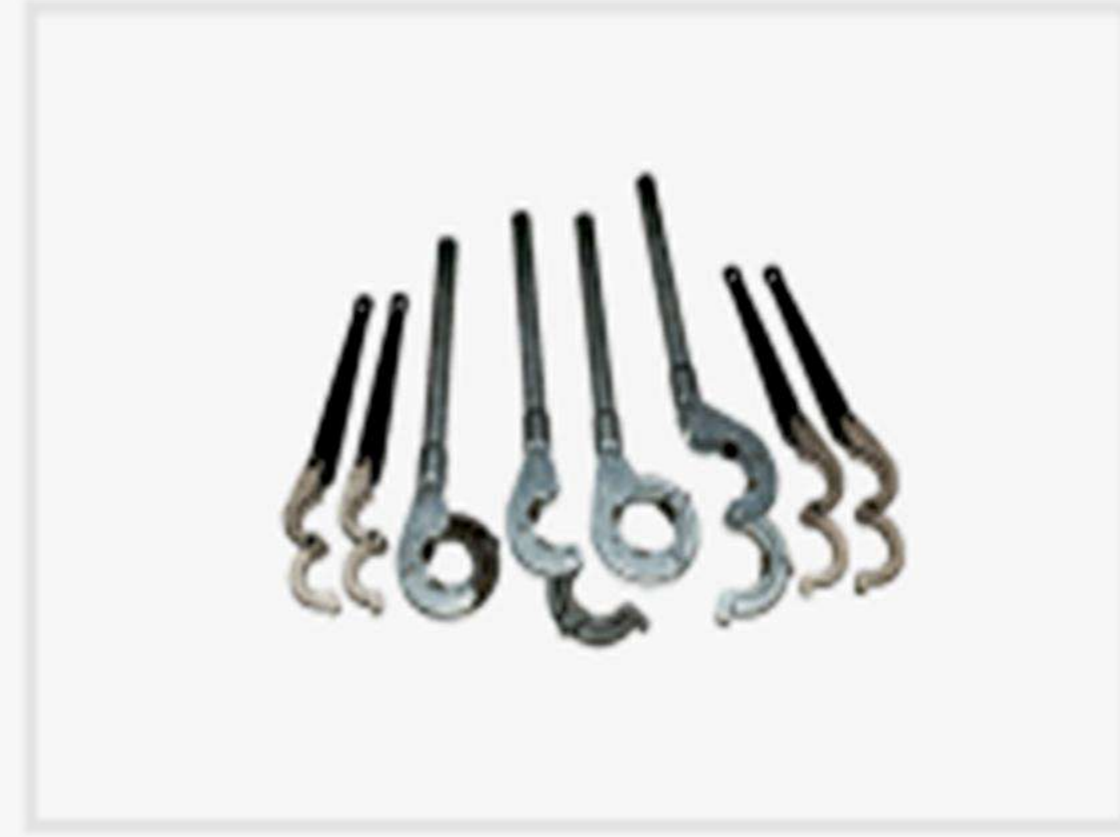
Sub



Water Swivel



Hoisting Plug



Circle Wrench



Foot Clamp



Recovery Tools



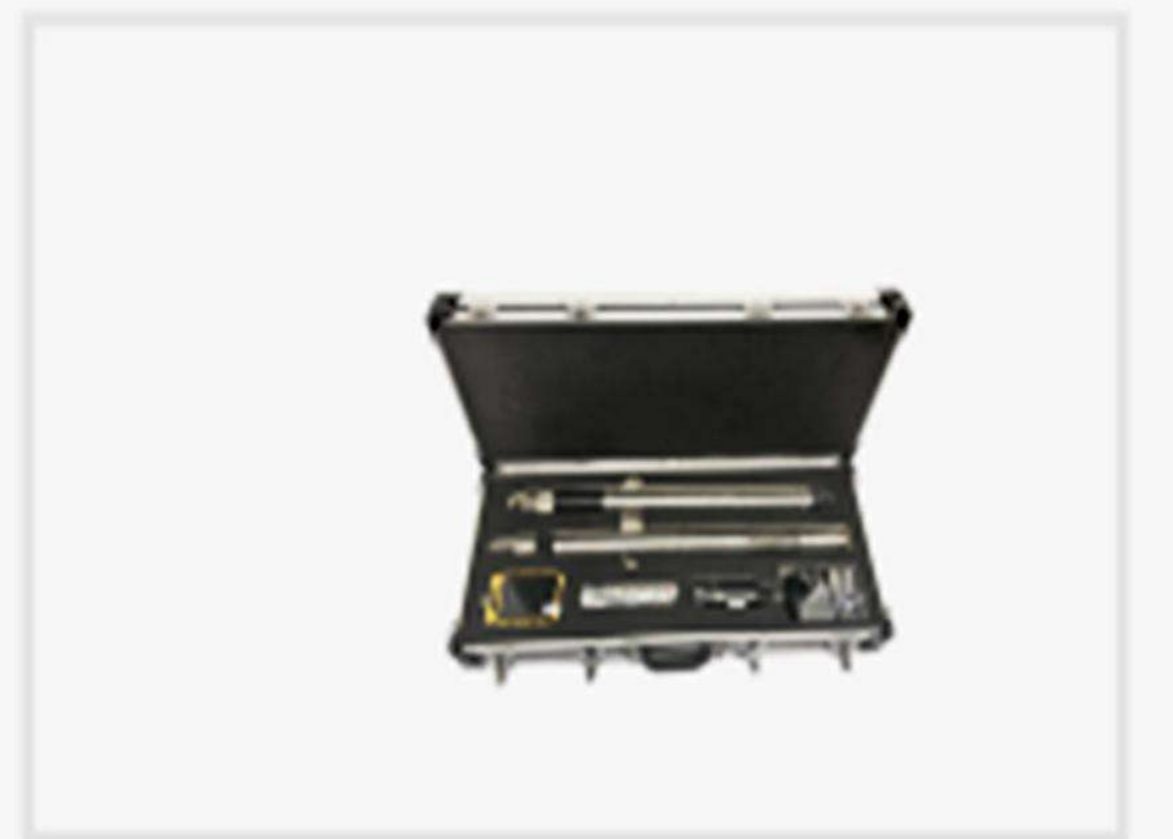
Core Trays



Rope Winches



Mud Agitayor



Instrument

In Project Site



Main Structure

